



6 Fontwell Close  
Maidenhead  
£695,000 Freehold

6 Fontwell Close  
Maidenhead, Berkshire SL6 5JX

Price £695,000 Freehold

*'A well presented 3 bedroom bungalow'*

A recently refurbished 3 bedroom detached bungalow in a quiet cul- de-sac close to Pinkneys Green, Newlands Girls School and local shops. This well proportioned property, which is being sold with no onward chain, benefits from an enclosed rear garden, driveway parking and a garage.

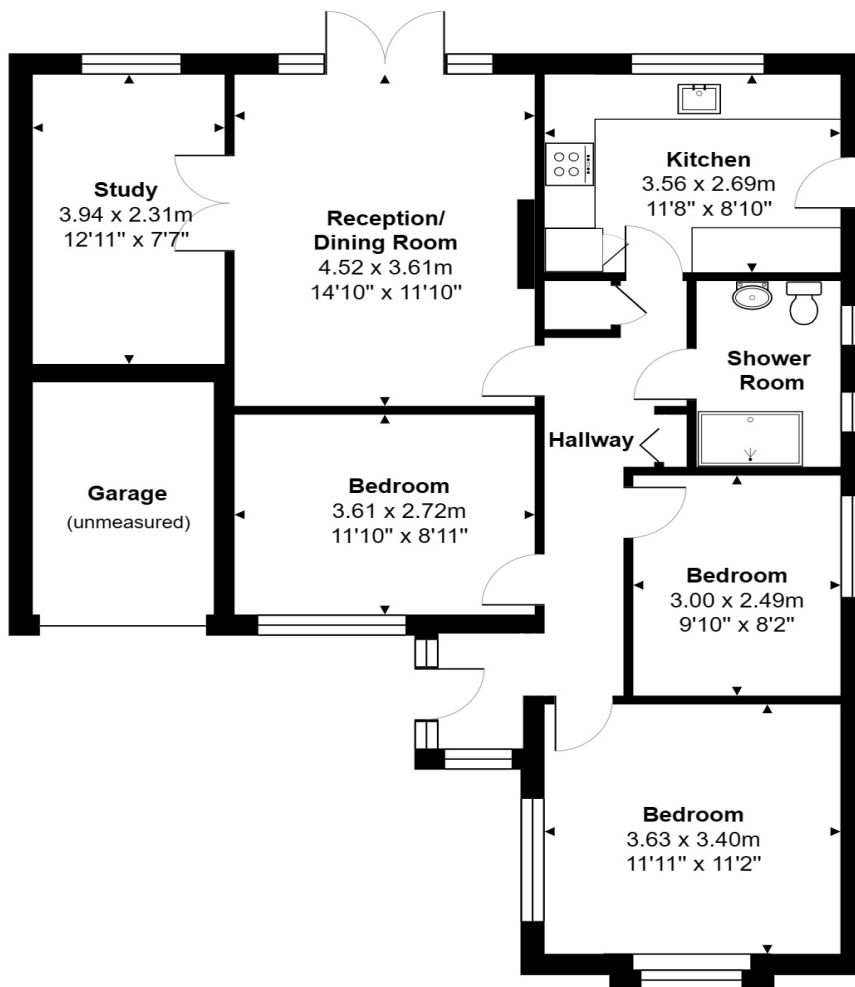
**Council Tax band: E**

**EPC rating:**

Proceed west out of Maidenhead along the Bath Road (A4) and at the top of Castle Hill bear right at the mini roundabout into St Marks Road. Continue along here for about 1 mile and bear right at the top into Pinkneys Road and then take the second left into Camley Gardens. Proceed to the end of here and turn right into Headington Road and first left into Fontwell Close.

**Fontwell Close, Maidenhead, SL6 5JX**

Approx. Total Area: 83.9 m<sup>2</sup> ... 903 ft<sup>2</sup> (excluding garage)



Whilst every attempt has been made to ensure the accuracy of the floorplans contained here, measurements of doors, windows and rooms are approximate and no responsibility is taken for any error, omission or mis-statement. These plans are for representation purposes only.









## PIKE SMITH & KEMP

22 QUEEN STREET, MAIDENHEAD, BERKSHIRE SL6 1HZ

MAIDENHEAD@PIKESMITHKEMP.CO.UK

[www.pskweb.co.uk](http://www.pskweb.co.uk)

01628 621177